

# Agri-environmental support and management of fen grasslands in Slovakia

- Traditional management on fen grasslands (manual mowing, low intensity grazing) is disappearing in the whole country
- Therefore nature conservancy has to organize management of the localities in many cases
- Agri-environmental programme may be one of the possibilities how to ensure regular management

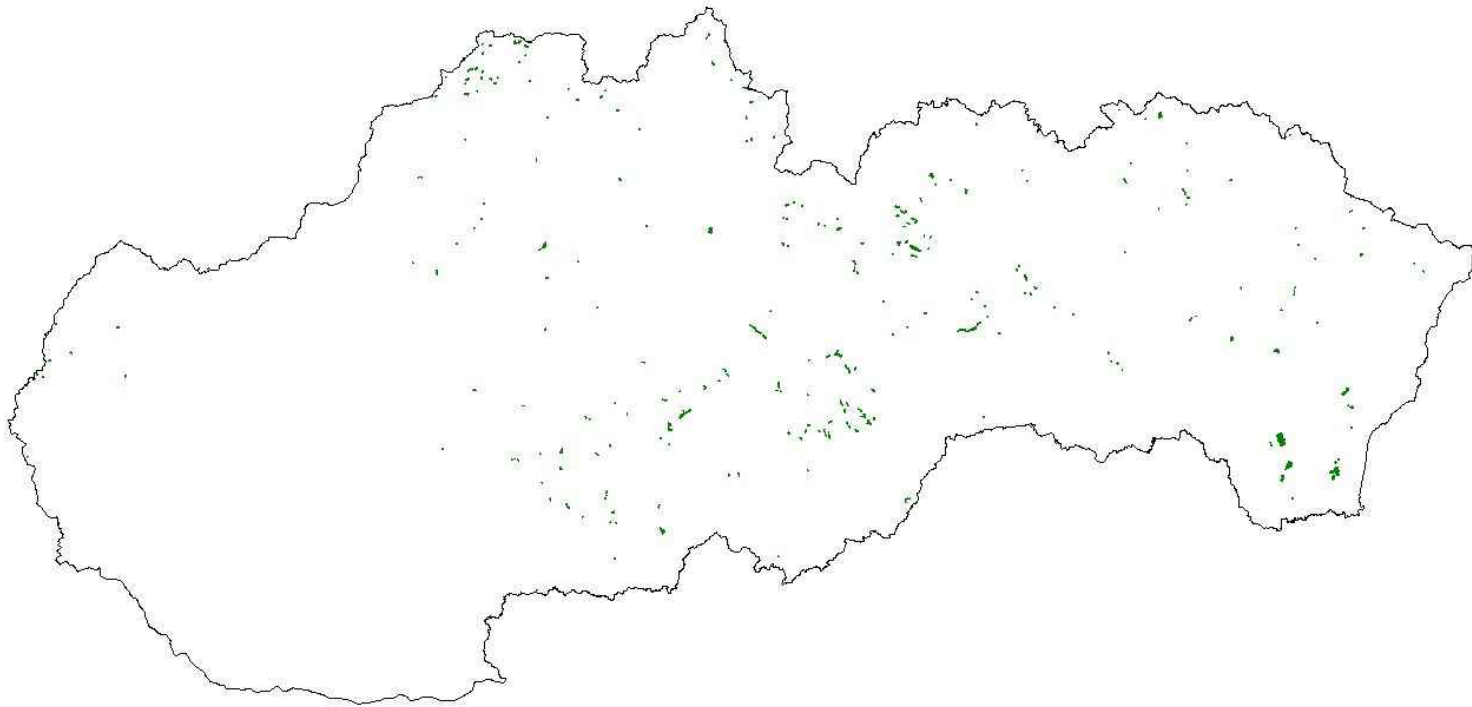
## Agri-environmental programme in Slovakia

- applied from 2003
- one of the measures is the scheme for conservation of semi-natural and natural grasslands
- it is implemented on more than 100,000 hectares
- 2003-2007 grasslands within the scheme divided into four groups (dry, mesic, wet and high-mountain)
- since 2007 more precise typology, fen grasslands together with Molinia and Calthion grasslands have special group (type F) with special measures and the highest payment (approx. 185 EUR)
- the scheme may be implemented only on certified blocks (2003-2006 certification done by DAPHNE, since 2008 done by the State Nature Conservancy)

## Conditions for fen grasslands

- only manual mowing or mowing by light machinery is allowed
- first cut before 15th July, but exceptions are possible
- no grazing
- no fertilizers
- no mulching
- no drainage

4309 hectares of grasslands certified by SNC in the group F  
Fen grasslands are on 219 hectares



## Experience with application of agri-environmental programme on fen grasslands

- it can be interesting incentive for some farmers, mostly smaller
- it may ensure long-term management of fen grasslands
- there are some good practice examples e.g. Belianske lúky
- but, still many localities do not have appropriate management even they are in programme
- main problem is use of inappropriate machinery (mostly heavy tractors)
- some localities are still trampled by cattle, in spite of prohibition of grazing
- some localities are only mulched in spite of mulching exclusion
- some localities remain untouched in spite of application of the measures – control is still insufficient
- payment is not sufficient for farmers on some localities especially out of high-ranked LFAs